



redrose

17 Spinners Court

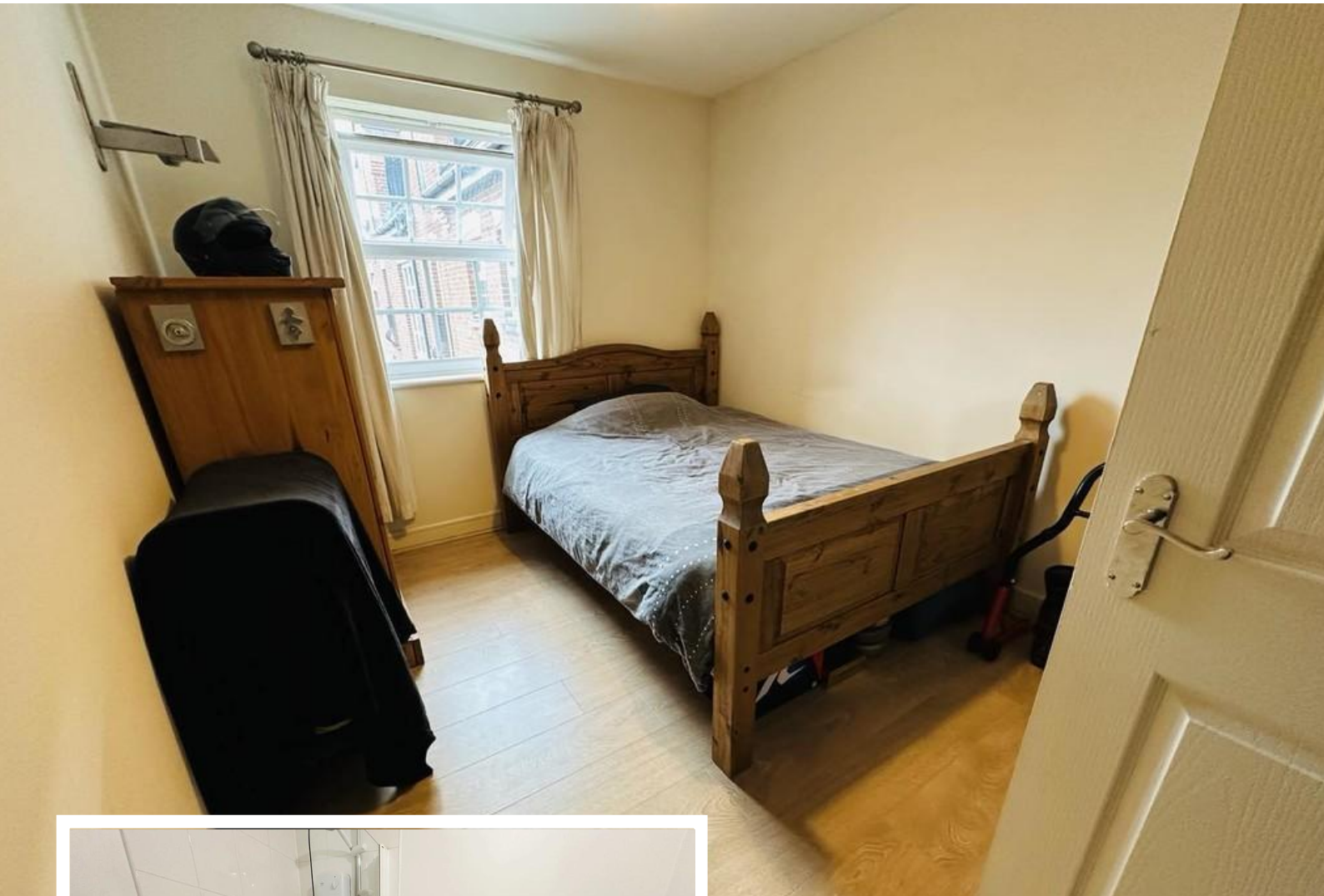
Buckshaw Village, Chorley, PR7 7AU

Spacious one bedroomed first floor apartment with large open plan living area, great size double bedroom and bathroom. Set in the heart of Buckshaw Village the apartment is in an ideal location for commuters and would make a great investment or first purchase. The apartment block is well maintained ...

Asking Price Of £95,000

EPC Rating 'TBC'





Property Description

PARKING

Allocated parking space, secure entry system

ENTRANCE HALLWAY

5.10 x 1.01 Wooden front door, door to airing cupboard, doors to remaining rooms

LOUNGE

5.47 x 3.19 Double glazed window, laminate flooring, wall mounted electric heating, ceiling light point x2. TV point, BT point. Leading to;

KITCHEN

2.68 x 2.42 Double glazed Patio door with wrought iron Juliet balcony. Plinth heater, work surface, range of wall and base units in light beech with contrasting wood block work tops. Single electric oven, electric ceramic hob, extractor, space for washing machine, space for fridge freezer vinyl flooring in the kitchen area. Ceiling light point.

BEDROOM

4.26 x 2.67 Double glazed window, electric panel heater, laminate flooring

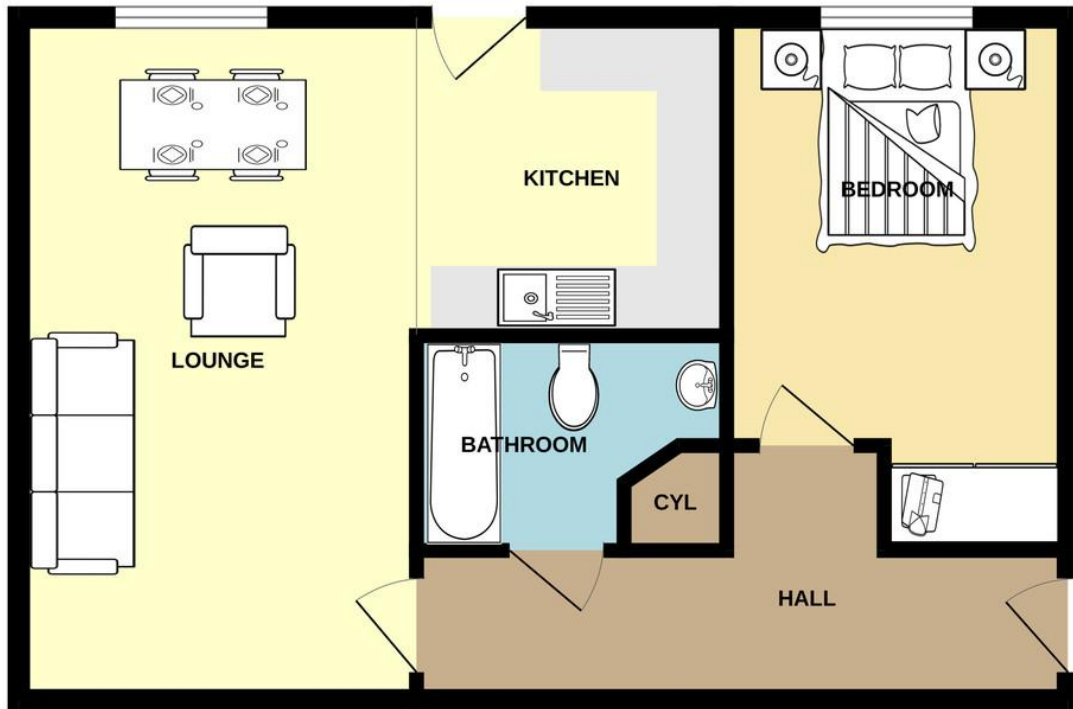
BATHROOM

2.37 x 1.76 max Good sized bathroom, white bath and shower over, glass shower screen, wc, wash hand basin, vinyl flooring

MORTGAGE

If you would like a Free Mortgage Consultation our Financial Adviser will be able to meet with you discuss your requirements and to assess your mortgage capability. You will receive professional and independent mortgage advice along with any other associated services

GROUND FLOOR



Whilst every attempt has been made to ensure the accuracy of the floorplan contained here, measurements of doors, windows, rooms and any other items are approximate and no responsibility is taken for any error.

%epcGraph_c_1_378%